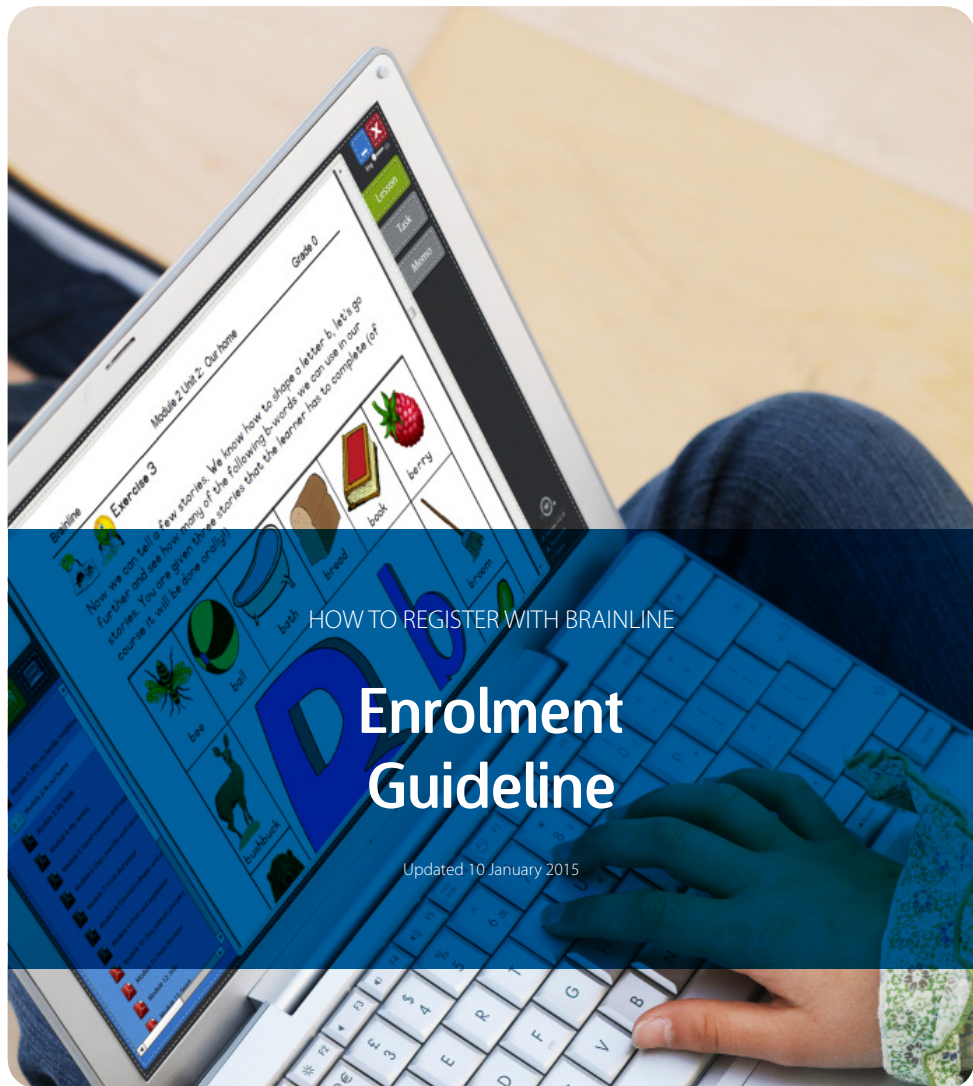




## Brainline Learning World

The Leader in Distance Education



HOW TO REGISTER WITH BRAINLINE

# Enrolment Guideline

Updated 10 January 2015

valid

enjoyable learning experience

developing full potential

unrivalled support

consistent

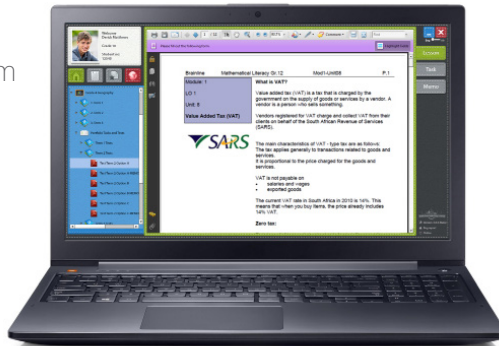
assessment integrity

reaching higher

quality curriculum

modern technology

reliable



innovation

encouraging self-motivation

individualised learning

success

Copyright 2015 © Brainline Learning World (Pty) Ltd.  
All rights reserved.

E & OE. While care has been taken to ensure that information contained in this publication is true and correct at the time of publication, changes may occur. All prices shown were correct at time of printing and may change without notice.

Terms and conditions apply.

Version 1.4  
4 June 2015 08:40



## Brainline celebrates 25 years of academic excellence through distance education in 2015.

### Contents

A whole new learning experience	4
A trusted relationship of excellence	5
Making the right choice	6
Every industry has its leader	7
Edu2Go for Gr 1 - 9	8
IEB for Gr 10 - 12	9
Grade R	10 - 11
Grade 1 - 3	12 - 13
Grade 4 - 7	14 - 15
Grade 8 - 9	16 - 17
Grade 10 - 11	18 - 19
Grade 12	20 - 21
Adult Matric	22 - 23
How to enrol online	24
Additional information	25
Contact details	26
Institutions you can trust	27

# A whole new learning experience

A warm welcome to Brainline Learning World. An exciting learning experience lies before you as you embark on the distance education journey, which will challenge and support you to function successfully in future endeavours and your career choice.

At Brainline, we are committed to provide a quality e-learning education and assessment service to distance education candidates from Grade R to Grade 12. Brainline does not teach the child, but simply provides an opportunity for self-motivated and disciplined learners to develop their potential.

By delivering a quality curriculum to all grades, in line with the National Curriculum Statement, through cutting edge technology, and offering world-class online assessment and support, you can count on us to make the distance education journey rewarding.

Completing the school years through Brainline develops skills for lifelong learning, encourages self-motivation, responsibility and dedication, and accounts for an overall enjoyable learning experience.

We trust that this prospectus will help you to discover the endless opportunities of distance education through Brainline.

*The Brainline Team*

# A trusted relationship of excellence

## Our vision

To be an innovative, quality-driven e-learning distance education institution.

## Our mission

Brainline Learning World is committed to providing a quality e-learning and assessment service to the distance education candidate from Grade R to 12.

## Accreditation

Brainline is proudly registered with the Independent Examinations Board (IEB), known for its high educational standards and outstanding commitment to quality assessment. Brainline's registration with the IEB enables learners to be assured of quality assessment in accordance with policy. This means that you can trust Brainline to assist you on your journey as you work towards your fully accredited National Senior Certificate.

## Qualifications

Brainline offers a quality curriculum and assessment in accordance with legislation. Learners who comply with the national policy requirements are awarded the National Senior Certificate, accredited by Umalusi. This NSC is a 130 credit certificate at Level 4 on the National Qualifications Framework (NQF), and is intended to provide learners entrance to further study after school.

## Legal status

Brainline Learning World (Pty) Ltd

Registration number: 2008/02005/07

Director: Coleen Cronje

(In this document referred to as Brainline Learning World or Brainline.)

# Making the right choice



Distance education allows you to take control of your own studies. As the learner's future is at stake, it is important to be prepared and informed about the adventure of studying in your own environment.

## 1. Only the best for the learner

Whether it is due to learning challenges, faster paced learning, international sport events or travelling parents, choosing distance education should be in the interest of the learner and should allow them to achieve their best, academically.

## 3. Assessment that matters

Brainline offers self-assessment and/or optional formal assessment for Gr 1 - 9, and step-by-step formal assessment (School-Based Assessment) for Gr 10 - 12. All formal assessment is moderated to ensure absolute standardised results and assessment integrity.

## 2. A curriculum to succeed

Brainline's uniquely combined curriculum allows any parent or tutor to guide the learner through the coursework required to master the academic year. The curriculum for all grades are in line with the National Curriculum Statement, and is delivered exclusively through the Brainline Software (DVD) and textbooks in some subjects.

## 4. A qualification that opens doors

Learners who complete Grade 12 successfully through Brainline are issued the National Senior Certificate, awarded by Umalusi. This is exactly the same certificate that a learner in a public or private school would receive and allows for further study after school.

**"I am so grateful for discovering Brainline. Both my children are pursuing their education through Brainline and we are very impressed with the quality of the material and the excellent service rendered by the staff that we are dealing with." - Mrs Erica Mulondo**

# Every industry has its leader

Isn't it good to know that with Brainline, every learner can achieve their authentic National Senior Certificate?



## Quality education in accordance with legislation

Brainline is registered with the Independent Examinations Board (IEB), known for its high educational standards and outstanding commitment to quality assessment. Brainline's registration with the IEB enables learners to be assured of quality assessment in accordance with policy.



## An up-to-date curriculum, all year long

Brainline's curriculum is carefully combined and delivered via the Brainline application and provided on a DVD. The curriculum is in line with the National Curriculum Statement (Grade R - 12) and contains lessons, tasks and memorandums. Updates over the Internet enable us to instantly provide learners with the latest, up-to-date curriculum updates as they become available.



## Convenient, innovative, online assessment

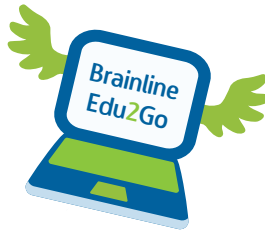
Formal assessment is exclusively delivered and managed through [www.brainONLINE.com](http://www.brainONLINE.com), Brainline's virtual online campus. Online delivery of assessment makes it possible to provide learners with timeous feedback. A subject overview shows a summary of all tasks and tests outstanding, completed and awaiting approval. The learners have 24/7 access to the assessment website, and can track their progress as the marks become available.



## A dedicated Brainline team on your side

The Brainline team is committed to providing quality e-Learning education and assessment service to candidates from Grade 1 to Grade 12. We are passionate about distance education.

"I am so impressed with the curriculum and service from Brainline Learning World. I have dealt with so many bad companies that it is utterly refreshing to get good service from someone for once. WOW. Thank you."



# Edu2Go for Gr R - 9

## Edu2Go with self-assessment and optional formal assessment

True homeschooling on your own terms! Edu2Go is ideal for learners in Grade R – 9 who do not want to be restricted by timelines. The study material is complete and all the assignments, tasks and tests are based on the requirements of the Department of Education (CAPS documents).

A report is optional and you can request formal assessment for June and/or November at an additional, affordable fee.

NB: Gr 8 - 9 is presented with either full-year assessment or Edu2Go with NO formal assessment. Edu2Go with self-assessment is NOT recommended, and formal assessment cannot be added later in the year.)

- ✓ Affordable and convenient
- ✓ Convenient self-paced learning (flexible school hours)
- ✓ Self-assessment will be available to download from brainONLINE throughout the year
- ✓ Optional Formal Assessment (June and/or November report).



The ideal home school solution with a complete curriculum and self assessment.



In line with the Curriculum Assessment Policy Statements.



Printable learning material is provided on DVD, and requires Internet for activation.



Optional formal assessment in June and/or November.



Receive a Brainline report when registered for formal assessment.



Convenient self-paced learning allows for one-on-one tuition.





# IEB-aligned Gr 10 - 12

## NSC-based curriculum and step-by-step IEB-aligned assessment

Achieve your National Senior Certificate (NSC) with no compromise! Grade 10 – 12 learners and parents can be assured of only the highest standard distance education. Study material is supplied on a DVD and textbooks (in some subjects) and is aligned with the requirements of the IEB.

With world-class online assessment on [www.brainONLINE.com](http://www.brainONLINE.com), unrivalled support throughout the year, and regular feedback from dedicated subject advisors, you get complete peace of mind!

- ✓ Study with a total peace of mind
- ✓ Step-by-step guidance throughout the year.
- ✓ Scheduled online assessment.
- ✓ Dedicated Subject advisors for support.
- ✓ Allows for further studies at an Institute or University (Gr 12 NSC)



Includes a complete NCS curriculum and IEB-aligned formal assessment.



Requires an independent invigilator for formal assessment.



Requires a computer, scanner and stable Internet access.



Compulsory scheduled tasks, tests and oral assignments.



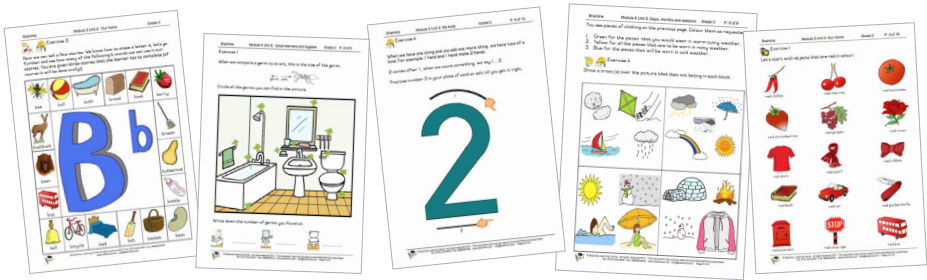
Formal assessment takes place on your personal online profile.



Printable learning material is provided on DVD, and requires Internet for activation.

# Grade R

Grade R is the first year of the foundation phase of outcomes-based education. It is ideal for developing a firm academic foundation for children aged 4 to 5 .



## Develop a firm academic foundation



### Learning outcomes:

Outcomes include reading and viewing, design, data handling, listening exercises, interpretation, writing, language structure, thinking and reasoning.



### ABC and 123:

The complete alphabet and number set is learned throughout the curriculum with specific literacy and numeracy learning outcomes.



### Play & learn:

Practical activities are closely applied to develop and promote the main skills the learner needs to acquire.



### Any time, in any order:

The 21 modules can be done at any time and in any order, as the needs or circumstances of the learner allow.



### A range of topics:

A wide range of topics are explored to expand the learner's knowledge of the wonderful world around him/her.



### Approved curriculum:

Our brand new curriculum is based on the new South African curriculum with specific learning outcomes in each module.



Brainline offers one of the most comprehensive Grade R curriculums in South Africa.

- ✓ Full colour, ringbound books
- ✓ 21 comprehensive modules
- ✓ Simple, modern and easy to understand
- ✓ Clear guidelines for the parent/tutor
- ✓ Complete alphabet and number set
- ✓ CD includes audio stories

## 21 comprehensive modules

1. I, my family, neighbours and friends
2. In our home
3. My body
4. My senses
5. Good manners and hygiene
6. Days, months and seasons
7. Cook and enjoy
8. Dinosaurs, shapes and concepts
9. Fruit and vegetables
10. Zoo animals and pets
11. From the farm
12. Jobs
13. Sport
14. Disasters
15. The ocean and its animals
16. Plants
17. Insects and other bugs
18. Deserts, mountains, jungles and oceans
19. Music
20. Transport
21. The world and space

The Gr R curriculum is available in full-colour books or on CD:

Grade R	Price	VAT	Total
21 x full colour books Plus CD	R2 912.00	R408.00	R3 320.00
CD Only	R2 346.00	R329.00	R2 675.00

### Ideal for parents or tutors, or pre-primary schools!

Refer to page 24 for instructions on how to enrol online. You may also contact us at +27 (12) 543 5000 or [info@brainline.com](mailto:info@brainline.com).

# Grade 1 - 3

**Who would ever imagine that your first school day could be in the comfort of your own environment? Edu2Go is a true homeschool solution and offers every learner endless possibilities to achieve their best.**



Edu2Go: The ideal homeschool solution with a complete curriculum and self-assessment.



Learning material is provided on a DVD, and updates might be available to download throughout the year.



Register for optional formal assessment to receive a report in June and/or November.



Convenient self-paced learning allows for one-on-one tuition.

## Curriculum

Brainline's Edu2Go program for Gr 1 - 3 consists of a fully integrated, day-by-day, scheduled curriculum which allows learners to be actively involved and develop a strong love of learning. The lessons and resources – with clear guidelines – enable the parent or tutor to guide the learner through the required modules in order to build a base of knowledge required for full academic development.

Learning material is delivered via the Brainline DVD. It is advisable to store the completed lessons, as evidence of the learner's progress and performance, in a personal file. You are not required to send these tasks to Brainline.

## Integrated Subjects

- » English Home Language
- » Afrikaans First Additional Language
- » Mathematics
- » Life Skills

## Self-Assessment vs Formal Assessment

Self-assessment, in the form of June and November exams, is pre-packaged in the DVD. The parent/tutor may decide when and if a learner should complete these exams, and he/she is also responsible for marking the exams according to a password-protected memorandum. A formal Brainline report is NOT included in this option.

Formal Assessment consists of scheduled examinations in June and/or November, and takes place on the learner's personalised profile on brainONLINE.com. Formal assessment is optional, but nevertheless an ideal opportunity to assess the learner's progress. Learners registered for formal assessment will receive a formal Brainline Report. We highly recommend that the learner completes at least one assessment (in November) in order to receive a report for the grade achieved.

## Report

A formal Brainline Report is issued only when the learner is registered for Formal Assessment either in June and/or November. External examinations are taken, domain referenced, for home schooling parents, without prejudice of rights.

## Rating codes:

7	Excellent	80% - 100%
6	Meritorious	70% - 79%
5	Substantial	60% - 69%
4	Adequate	50% - 59%
3	Moderate	40% - 49%
2	Elementary	30% - 39%
1	Requirements not achieved	0% - 29%

## Progression

There are no set requirements to determine whether a learner should be allowed to progress to the next grade.

## Admission requirements

Learners are welcome to enrol at any time of the year.

## Fees for 2015

Grade 1, 2 or 3	Price	VAT	Total
Curriculum with self-assessment	R3 850.00	R540.00	R4 390.00
Optional formal assessment (June)	R658.00	R92.00	R750.00
Optional formal assessment (Nov)	R658.00	R92.00	R750.00

# Grade 4 - 7

**Learning starts to get serious, but is still an adventure! With a wider range of subjects, the learner gets exposed to a more structured learning experience, in preparation of the higher grades to follow.**



Edu2Go: The ideal home school solution with a complete curriculum and self-assessment.



Learning material is provided on a DVD, and updates might be available to download throughout the year.



Register for optional formal assessment to receive a report in June and/or November.



Convenient self-paced learning allows for one-on-one tuition.

## Curriculum

Brainline's Edu2Go program for Gr 4 - 7 consists of a complete curriculum in line with CAPS. It allows learners to be actively involved and continues to develop a strong love of learning. The lessons and resources enable the parent or tutor to guide the learner through the required modules in order to build on the base of knowledge required for successful academic development.

Lessons, tasks and memorandums are delivered via the Brainline DVD. It is advisable to store the completed lessons, as evidence of the learner's progress and performance, in a personal file. You are not required to send these tasks to Brainline. Remember that your computer needs to be connected to the Internet to activate the learner's profile, and accessed at least once every 30 days in order to keep the Brainline program active. Internet access is also required to download possible curriculum updates throughout the year.

## Subjects

- » Afrikaans First Additional Language
- » English Home Language
- » Mathematics
- » Life Skills
- » Natural Sciences
- » Social Sciences (Geography & History)
- » Economic and Management Sciences (only Gr 7)
- » Technology (only Gr 7)
- » Creative Arts (only Gr 7)

## Self-Assessment vs Formal Assessment

Self-assessment in the form of June and November exams will be available to download later in the year. The parent/tutor may decide when and if a learner should complete these exams, and is also responsible for marking the exams according to a password-protected memorandum. A formal Brainline report is NOT issued for self-assessment.

Formal Assessment consists of scheduled examinations in June and/or November, and takes place on the learner's personalised profile on brainONLINE.com. Formal assessment is optional, but nevertheless an ideal opportunity to assess the progress of the learner. Learners that are registered for formal assessment will receive a formal Brainline Report. We highly recommend that the learner completes at least one assessment (in November) in order to receive a report for the grade achieved.

## Report

A formal Brainline Report is issued only when the learner is registered for Formal Assessment either in June and/or November. External examinations are taken, domain referenced, for home schooling parents, without prejudice of rights.

## Scale of Achievement

7	Excellent	80% - 100%
6	Meritorious	70% - 79%
5	Substantial	60% - 69%
4	Adequate	50% - 59%
3	Moderate	40% - 49%
2	Elementary	30% - 39%
1	Requirements not achieved	0% - 29%

## Progression

There are no set requirements to determine whether a learner should be allowed to progress to the next grade or not.

## Admission requirements

Learners are welcome to enrol any time of the year.

## Fees for 2015

Grade 4, 5, 6 or 7	Price	VAT	Total
Curriculum with self-assessment	R5 820.00	R815.00	R6 635.00
Optional formal assessment (June)	R1 035.00	R115.00	R1 180.00
Optional formal assessment (Nov)	R1 035.00	R115.00	R1 180.00

# Grade 8 - 9

**Learning starts to get serious, but is still an adventure! With a wider range of subjects, the learner gets exposed to a more structured learning experience, in preparation of the higher grades to follow.**



**Full Assessment**  
Register for full-year formal assessment to receive a report at the end of the year.



Learning material is provided on a DVD, and updates might be available to download throughout the year.



Convenient self-paced learning allows for one-on-one tuition.

## Curriculum

Brainline's program for Gr 8 and 9 consists of a complete curriculum in line with the CAPS, which allows learners to be actively involved and continues to develop a strong love of learning. The lessons and resources enable the parent or tutor to guide the learner through the required modules in order to build on their base of knowledge required for successful academic development.

Lessons, tasks and memorandums are delivered via the Brainline DVD. It is advisable to store the completed lessons, as evidence of the learner's progress and performance, in a personal file. You are not required to send these tasks to Brainline. Remember that your computer needs to be connected to the Internet to activate the learner's profile, and accessed at least once every 30 days in order to keep the Brainline program active. Internet access is also required to download possible curriculum updates throughout the year.

## Subjects

- » Afrikaans First Additional Language
- » English Home Language
- » Mathematics
- » Life Orientation
- » Natural Sciences
- » Social Sciences (Geography & History)
- » Economic and Management Science
- » Technology
- » Creative Arts



## Assessment

Assessment takes place on [www.brainONLINE.com](http://www.brainONLINE.com). This is where we communicate with you, and where you download, complete and upload all your formal assessment assignments. You need to visit brainONLINE at least once a week to stay up-to-date with your studies.

Known as School-Based Assessment (SBA), it consists of tasks, PETS, PATS, oral assignments, compulsory practical sessions in some subjects, tests and examinations.

All Brainline's formal assessments are moderated to ensure quality, validity and integrity, thus delivering only the best assessment to our learners.

Tests and exams are completed over the Internet in your own environment, under the supervision of a registered independent invigilator.

## Achievement and Reports

A mid-year report is issued after the exam in June, as well as a final report at the end of the year. The report includes the marks obtained from the School-Based Assessment, as well as the examinations.

### Scale of Achievement

7	Excellent	80% - 100%
6	Meritorious	70% - 79%
5	Substantial	60% - 69%
4	Adequate	50% - 59%
3	Moderate	40% - 49%
2	Elementary	30% - 39%
1	Requirements not achieved	0% - 29%

## Progression

There are no set requirements to determine whether a learner should be allowed to progress to the next grade or not.

## Admission requirements

Learners are welcome to enrol any time of the year.

## Fees for 2015

Grade 8 or 9	Price	VAT	Total
Curriculum with full-year assessment	R12 202.00	R1 708.00	R13 910.00



# Grade 10 - 11

**Taking control of how, when and where you study is very important in preparation for your Matric final exam. With Brainline, you have all the control you need to give your best and achieve great results.**

## Curriculum

Brainline's curriculum for Gr 10 and 11 is uniquely combined to assist the learner with his/her studies. Study material is supplied on a DVD and textbooks (in some subjects), and is aligned with the requirements of the IEB (as based on the Revised National Curriculum Statement).

## Assessment

Assessment takes place on [www.brainONLINE.com](http://www.brainONLINE.com). This is where we communicate with you, and where you download, complete and upload all your formal assessment assignments. You need to visit brainONLINE at least once a week to stay up-to-date with your studies.

Known as School-Based Assessment (SBA), it consists of tasks, PETS, PATS, oral assignments, and compulsory practical sessions in some subjects, tests and examinations.

All Brainline's formal assessments are moderated to ensure quality, validity and integrity, thus delivering only the best assessment to our learners.

Tests and exams are completed over the Internet in your own environment, under the supervision of a registered independent invigilator.

## Achievement and Reports

For Gr 10 and 11, a mid-year report is issued after the exam in June, as well as a final report at the end of the year. The report includes the marks obtained from the School-Based Assessment, as well as the examinations.

## Promotion

In order to be promoted to the next grade, a learner must achieve:

- » A minimum of 40% or more in 3 subjects. One of the 3 subjects must be an official language at Home Language level.
- » A minimum of 30% or more in 3 other subjects.

## Admission requirements

A learner has to pass the previous grade in order to proceed to the next grade. An official report is required, and evidence of the learner's SBA might be required.

When a learner enrolls with Brainline from another institution, of which Brainline cannot determine the validity and/or integrity of the report, the learner might be required to complete a bridging course in all the subjects for that grade before he/she is approved to study with Brainline.

## Subjects

### Languages

- Afrikaans Eerste Addisionele Taal\*
- Afrikaans Huistaal\*
- English Home Language\*
- English First Additional Language\*
- IsiZulu

### Mathematics

- Mathematics (full)
- Mathematical Literacy (basic)

### Life Orientation

- Life Orientation<sup>^</sup> (compulsory)

### Choose 3 additional subjects

- Accounting
- Agricultural Sciences
- Business Studies
- Computer Applications Technology (s)<sup>^</sup>
- Engineering Graphics & Design (s)<sup>^</sup>
- Consumer Studies <sup>°</sup>
- Economics
- Geography
- History
- Life Sciences <sup>°</sup>
- Physical Sciences
- Tourism<sup>^</sup>

\* You need to attend a compulsory oral session at Brainline in Grade 12 at a Brainline centre.

<sup>^</sup> You'll need to complete and submit practical assessment tasks and/or practical evaluation tasks on brainONLINE.

<sup>°</sup> You need to attend compulsory practical sessions in Gr 12 at Brainline in Montana, Pretoria. (Additional fees may apply.)

(s) Additional software required. EGD: TurboCAD 16 Deluxe, CAT: Microsoft Office Suite 2010 Professional or newer.

Full Mathematics are compulsory for Physical Sciences and Accounting.

## Fees for 2015

Grade 10 or 11	Price	VAT	Total
Full course (7 subjects)	R15 298.00	R2 142.00	R17 440.00
Single subject	R3 105.00	R435.00	R3 540.00
Consumer Studies practical fee			R1 750.00



# Grade 12

**Taking control of how, when and where you study is very important in preparation for your Matric final exam. With Brainline, you have all the control you need to give your best and achieve great results.**

## Curriculum

Brainline's curriculum for Gr 12 is put together uniquely to assist the learner with his/her studies. Study material is supplied on a DVD and textbooks (for some subjects), and is aligned with the requirements of the IEB (as based on the Revised National Curriculum Statement).

## Assessment

Assessment takes place on [www.brainONLINE.com](http://www.brainONLINE.com). This is where we communicate with you, and where you download, complete and upload all your formal assessment assignments. You need to visit brainONLINE at least once a week to stay up-to-date with your studies. Known as School-Based Assessment (SBA), it consists out of tasks, PETS, PATS, compulsory oral assignments and examinations in both languages, and compulsory practical sessions in some subjects, tests and examinations.

All Brainline's formal assessments are moderated to ensure quality, validity and integrity, thus delivering only the best assessment to our learners.

Apart from the final IEB NSC exam which needs to be written at a designated exam centre at the end of the year, all tests and exams are completed over the Internet in your own environment, under the supervision of a registered independent invigilator.

## Achievement and Reports

For Gr 12, a report is issued after the exam in June, as well as after the Preliminary Examination. These Brainline reports include the marks obtained from the School-Based Assessment, as well as the Preliminary Examinations. The results for the IEB NSC examination are published in major newspapers, and learners receive their Certificates as soon as Brainline receives it from Umalusi.

## Promotion

In order to qualify for a National Senior Certificate, a learner must achieve a minimum of 40% or more in 3 subjects (one of the 3 subjects must be an official language at Home Language level) and a minimum of 30% or more in 3 other subjects. In order to qualify for entry into further study at the Higher Certificate level, Diploma level and Bachelor Degree level, higher results are required. Visit <http://www.ieb.co.za/School/nsc.php> for more information.

## Admission requirements

A learner has to pass the previous grade in order to proceed to the next grade. An official report is required, and evidence of the learner's SBA might be required.

When a learner enrolls with Brainline from another institution, of which Brainline cannot determine the validity and/or integrity of the report, the learner might be required to complete a bridging course in all the subjects for that grade before he/she is approved to study with Brainline.

## Subjects

You should complete 7 subjects to qualify for a National Senior Certificate; one home language, an additional language, Mathematics or Mathematical Literacy, Life Orientation, and a minimum of 3 NSC approved subjects.

### Languages

- Afrikaans Eerste Addisionele Taal\*
- Afrikaans Huistaal\*
- English Home Language\*
- English First Additional Language\*
- IsiZulu

### Mathematics

- Mathematics (full)
- Mathematical Literacy (basic)

### Life Orientation

- Life Orientation^ (compulsory)

### Choose 3 additional subjects

- Accounting
- Agricultural Sciences
- Business Studies
- Computer Applications Technology (s)^
- Engineering Graphics & Design (s)^
- Consumer Studies °
- Economics
- Geography
- History
- Life Sciences °
- Physical Sciences
- Tourism^

\* You need to attend a compulsory oral session at a Brainline centre in Grade 12

^ You'll need to complete and submit practical assessment tasks and/or practical evaluation tasks on brainONLINE.

° You need to attend compulsory practical sessions in Gr 12 at Brainline in Montana, Pretoria. (Additional fees may apply.)

(s) Additional software required. EGD: TurboCAD 16 Deluxe, CAT: Microsoft Office Suite 2010 Professional or newer.

Full Mathematics is recommended for Physical Sciences and Accounting.

## Fees for 2015

Grade 12	Price	VAT	Total
Full course (7 subjects)	R19 298.00	R2 702.00	R22 000.00
Single subject (incl exam fee)	R3 509.00	R491.00	R4 000.00
Concession	R4 210.00	R590.00	R4 800.00
IEB Exam Fee			R4 950.00
Consumer studies practical fee			R1 750.00
Life Sciences practical exam			R350.00



# Matric for Adults

**It's never too late to achieve your goal of obtaining your National Senior Certificate. If you are over 18 and have a computer with Internet access, you can achieve your Matric from Brainline within only two years!**

- ✓ This course is ideal for anyone over the age of 18 who wishes to obtain a National Senior Certificate.
- ✓ This course requires a fairly new computer, printer, scanner and Internet access to complete assignments and download curriculum updates.
- ✓ Receive your curriculum on DVD and text books. Install the Brainline application on your Windows-based computer.
- ✓ Complete your Grade 10 and Grade 11 in one year, and enrol for Grade 12 in the second year.
- ✓ This course requires an independent invigilator for formal assessment, who'll supervise and control the examinations conducted in your environment.
- ✓ This course contains compulsory scheduled tasks, tests and oral assignments, as well as practical sessions in some subjects.

## Study from the convenience of your own environment

Distance education is exciting, challenging and very rewarding. Brainline is a leading online distance education provider, and offers you a quality self-study curriculum and assessment in accordance with legislation. This means that you can trust Brainline to assist you on your journey as you work towards your fully accredited Matric certificate.

## Peace of mind of quality assessment

Brainline is registered with the Independent Examinations Board (IEB), known for its high educational standards and outstanding commitment to quality assessment. Brainline's registration with the IEB enables learners to be assured of quality assessment in accordance with policy.

## Assessment

Assessment takes place on [www.brainONLINE.com](http://www.brainONLINE.com). This is where we communicate with you, and where you download, complete and upload all your formal assessment assignments. You need to visit brainONLINE at least once a week to stay up-to-date with your studies.

Except for the final exam in Grade 12, all other exams are completed over the Internet in your own environment, under the supervision of a registered independent invigilator.

## Admission requirements

Candidates applying for this course should be over the age of 18, and have basic computer skills.

## Promotion

In order to qualify for a National Senior Certificate, a learner must achieve a minimum of 40% or more in 3 subjects (one of the 3 subjects must be an official language at Home Language level) and a minimum of 30% or more in 3 other subjects. In order to qualify for entry into further study at the Higher Certificate level, Diploma level and Bachelor Degree level, higher results are required. Visit <http://www.ieb.co.za/School/nsc.php> for more information.

## Excel through dedication

Distance education gives you the freedom to study in your own environment, in your own time. Remember that this course will require commitment and hard work over the next two years.

## Subjects

You should complete 7 subjects to qualify for a National Senior Certificate; one home language, an additional language, Mathematics or Mathematical Literacy, Life Orientation, and a minimum of 3 NSC approved subjects.

### Languages

- Afrikaans Eerste Addisionele Taal\*
- Afrikaans Huistaal\*
- English Home Language\*
- English First Additional Language\*
- IsiZulu

### Mathematics

- Mathematics (full)
- Mathematical Literacy (basic)

### Life Orientation

- Life Orientation<sup>^</sup> (compulsory)

### Choose 3 additional subjects

- Accounting
- Agricultural Sciences
- Business Studies
- Computer Applications Technology (s)<sup>^</sup>
- Engineering Graphics & Design (s)<sup>^</sup>
- Consumer Studies<sup>°</sup>
- Economics
- Geography
- History
- Life Sciences<sup>°</sup>
- Physical Sciences
- Tourism<sup>^</sup>

\* You need to attend a compulsory oral session at Brainline in Grade 12.

<sup>^</sup> You'll need to complete and submit practical assessment tasks and/or practical evaluation tasks on brainONLINE.

<sup>°</sup> You need to attend compulsory practical sessions in Gr 12 at Brainline in Montana, Pretoria. (Additional fees may apply.)

(s) Additional software required. EGD: TurboCAD 16 Deluxe, CAT: Microsoft Office Suite 2010 Professional or newer.

Full Mathematics is compulsory for Physical Sciences and Accounting.

## Fees for 2015

Matric for Adults	Price	VAT	Total
First Year (Gr 10 & 11 in 2015)	R14 035.00	R1 965.00	R16 000.00
Second Year (Gr 12 - 2016)	R21 053.00	R2 947.00	R24 000.00

# Enrol online in just a few steps.

## Online registration for new clients

Before you begin, you will need:

- » Electronic copy of the account holder's ID
- » Learner's birth certificate / ID document
- » Previous year's results / report (when enrolling for Gr 10 - 12)
- » Your correct banking details
- » Electronic proof of payment if paying with EFT

The online enrolment process:

1. Go to [www.brainline.com/enrol](http://www.brainline.com/enrol) and click on "Register as a new client"
2. Read and agree to the Standard Agreement
3. Create a new client profile (parent details)
4. Complete the parent details
5. Complete the learner details
6. Upload previous grade's report (when enrolling for Gr 11 - 12)
7. Choose the learner's subjects
8. Upload the learner's birth certificate/ID
9. Add another learner, or select "Check out"
10. If applicable, apply your discount code and choose your method of payment to complete the registration.
11. You will receive an e-mail and SMS when your account has been approved.

## Re-enrolling a learner for 2015:

Before you begin, you will need:

- » P-number
- » Password for [client.mybrainline.com](http://client.mybrainline.com)

Go to [www.brainline.com/enrol](http://www.brainline.com/enrol) and click on "Re-enrol for 2015"

1. Login to your account on the myAccount at [client.mybrainline.com](http://client.mybrainline.com)
2. Read and agree to the Standard Agreement
3. Review and update the parent details
4. Click on "Enrol all subjects" next to the learner you'd like to re-enrol for 2014
5. Review and update the learner's details
6. Upload the previous year's report (required for Gr 11 & 12)
7. Choose the learner's subjects
8. Select the learner/s and click "Check out"
9. If applicable, apply your discount code and choose your method of payment to complete the registration.
10. You will receive an e-mail and SMS when your account has been approved.



# Also good to know:

## Additional information

A minimum deposit of 20% is payable at registration. The balance is payable via a monthly debit order, or the total amount may be paid at once.

Note that the fees for Adult Matric's Grade 10 & 11 need to be settled by 01 September 2015, and 1 July 2016 for Adult Matric Gr 12.

All the fees for Grade 12 should be settled by 01 July 2015.

Fees for all other grades should be settled by 01 September 2015.

You'll have to give consent that Brainline Learning World may use your personal details to do a credit bureau enquiry to confirm whether the account holder will be able to commit to the payment responsibilities. Brainline also requests an approved proof of residence from the account holder, to verify the physical address.

Cancellations: Learners who fail to continue with or complete the course, for whatever reason, will still be liable for payment of the course fee and any/all outstanding payments.

## Computer requirements

- » Pentium 4 2.0 GHz or newer CPU (i3, i5 or i7 is even better)
- » At least 2GB RAM
- » 10+ GB of free hard drive space
- » Windows XP, Windows Vista, Windows 7 or Windows 8
- » Black laser printer (All-in-one printer and scanner is also advisable)

## Internet requirements

Remember that your computer needs to be connected to the Internet to activate the learner's profile, and at least once every 30 days, in order to keep the Brainline program active. Internet access is also required to download possible curriculum updates throughout the year.

Throughout the year you will have to visit brainONLINE.com regularly to stay informed, download tasks and tests for formal assessment, and to download possible curriculum updates, should they become available. When looking at Internet options, 1GB per month will be more than enough. Be careful when signing a contract, which might be costly and might bind you for a long period of time. There are many Internet service providers that offer good deals to suit your pocket.

## Social activities

Throughout the year, Brainline hosts a number of special events. From camps, tours and day trips, to a glamorous matric farewell at the end of the year. There are loads of opportunities to make new friends and have lots of fun!

# Visit any of our offices

## Pretoria Montana (Head Office)

---

Physical Address:  
215 Veronica Street  
Montana  
Gauteng  
South Africa  
0182

Contact Details:  
Tel: +27 (0) 12 543 5000  
Fax: +27 (0) 866 55 44 33  
E-mail: [info@brainline.com](mailto:info@brainline.com)

Office Hours:  
Monday – Thursday: 08:00 – 16:30  
Friday: 08:00 – 16:00

## Johannesburg

---

Physical Address  
The Pavilion Office Park,  
Block A  
12 Wessel Road  
Rivonia

Contact Details:  
Tel: (010) 590 8521  
Cell: 076 414 2774  
E-mail: [info@brainline.com](mailto:info@brainline.com)

Office Hours:  
Monday – Thursday: 08:00 – 16:30  
Friday: 08:00 – 16:00

## Bloemfontein

---

Physical Address:  
Baysvillage Shopping Centre  
Milner Road  
Bayswater  
9301

Contact Details:  
Cell: 071 424 1412  
Tel: (012) 543 5000  
E-mail: [bloem@brainline.com](mailto:bloem@brainline.com)

Office Hours:  
Monday – Thursday: 08:00 – 16:30  
Friday: 08:00 – 16:00

## Stellenbosch

---

Physical Address:  
Office 8  
The Woodmill  
Vredenburg Road  
Stellenbosch  
7600

Contact Details:  
Tel: (021) 882 9501  
Cell: 073 062 5604  
E-mail: [cape@brainline.com](mailto:cape@brainline.com)

Office Hours:  
Monday – Thursday: 08:00 – 16:30  
Friday: 08:00 – 16:00

## Umhlanga Rocks

---

Physical Address:  
Shop 2A  
Manhattan House  
Twilight Street  
Umhlanga Rocks

Contact Details:  
Cell: 071 424 9092  
Tel: (031) 566 4546  
E-mail: [kzn@brainline.com](mailto:kzn@brainline.com)

Office Hours:  
Monday – Thursday: 08:00 – 16:30  
Friday: 08:00 – 16:00

# Total peace of mind for quality assessment from institutions you can trust.



Brainline Learning World

Brainline is committed to provide a quality e-learning education and assessment service to learners from Grade R to 12, as well as adult matric.

With Edu2Go, a complete homeschool product with self-assessment and optional formal assessment, Brainline enables parents to educate their children from Gr R - 9 from the comfort of their own environment.

Brainline offers learners in Gr 10 - 12 the opportunity to achieve their National Senior Certificate through distance education and online assessment, in accordance with the IEB guidelines.

[www.brainline.com](http://www.brainline.com)



The Independent Examinations Board offers external assessment in accordance with legislation and Umalusi directives to Brainline, after which successful learners are awarded the National Senior Certificate.

The significance of its independence is to provide an alternate voice on curriculum and assessment matters, to contribute positively to debate on educational issues and to provide an approach that ensures that independent schools are accommodated in respect of their needs within the South African education framework, for the greater good of our country.

[www.ieb.co.za](http://www.ieb.co.za)



Umalusi, the Council for Quality assurance in General and Further Education Training sets and monitors standards for general and further education and training in South Africa in accordance with the National Qualifications Framework Act No 67 of 2008.

Umalusi awards the National Senior Certificates to learners who complete their matric successfully through Brainline.

When a learner passes the final examination with university exemption, this certificate enables him/her to apply for University entrance.

[www.umalusi.org.za](http://www.umalusi.org.za)

**"Making dreams reality" That's what you guys did for me :) made my dream a reality. My marks are higher, and no one will call me a nerd bird."**

- Karla Douglas



brainONLINE



Aa



Aa



Brainline celebrates 25 years of academic excellence through distance education in 2015.

[www.brainline.com](http://www.brainline.com)